



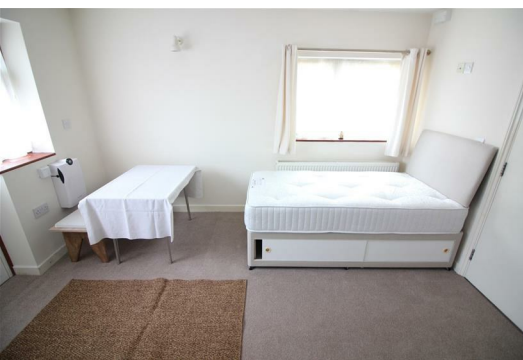
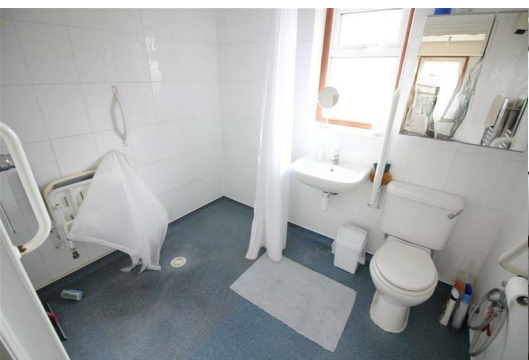
Magdala Road

Isleworth, TW7 7DD

£895 Per month



Including All Bills Spacious, modern, recently redecorated, self contained studio flat in Isleworth, situated on a quiet residential street, suitable for a single person only. Free parking, long term let, fully furnished, private kitchen & bathroom, close to shops and transport links. Ready to view now.



Including All Bills Spacious, modern, recently redecorated, self contained studio flat in Isleworth, situated on a quiet residential street, suitable for a single person only. Free parking, long term let, fully furnished, private kitchen & bathroom, close to shops and transport links. Ready to view now.

We are delighted to be able to offer for rent this spacious, modern and recently redecorated, self contained studio apartment.

Situated within close proximity to local buses, shops, parks and the hospital, this property is suitable for a single occupant only.

Priced inclusive of the gas, electric, water and council tax.

- Features include;
- A spacious, modern and self contained open plan studio apartment
 - Open plan, newly installed fitted kitchen, with a cooker, fridge/freezer, sink and good storage space
 - A large private built in bathroom suite with a walk in shower, WC and sink
 - Open plan bedroom and lounge area, furnished with a large wardrobe, single bed and dining set
 - Carpet and neutral decor throughout
 - Communal gas central heating system
 - Built in storage closet with a washer/dryer
 - Long term let only
 - Quiet residential area
 - Free off street parking
 - Private entrance
 - Ready to view now
 - Including gas, electric, water and council tax
 - This is suitable for a single person only and no children or couples are permitted

Call our office today to organise an appointment to view.

- Including all bills
- Single occupancy
- Long term let
- Parknig
- Close to shops & amenities
- Available early April
- Close to Isleworth railway
- Close to West Middlesex Hospital
- Furnished
- Good storage

Please contact Vine Estates on 020 3744 1177 if you wish to arrange a viewing appointment for this property or require further information.

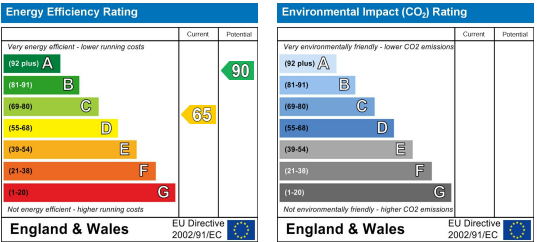
Area Map



Floor Plans



Energy Efficiency Graph



These particulars, whilst believed to be accurate are set out as a general outline only for guidance and do not constitute any part of an offer or contract. Intending purchasers should not rely on them as statements of representation of fact, but must satisfy themselves by inspection or otherwise as to their accuracy. No person in this firms employment has the authority to make or give any representation or warranty in respect of the property.